

# *Coffeetool*

## *R-60*



**COFFEETOOL**  
**M. & S. SAKANTARIS SOCIETY**  
*Hand crafted machines since 1952*



**Certified  
products**



# R-60



- ✓ Adjustable drum speed 0-100%
- ✓ Adjustable air supply 0-100%
- ✓ Adjustable SERVO burner volume 0-100%
- ✓ Separate fans for roasting & cooling
- ✓ Continuous duty, 24/7
- ✓ Touch screen control & data display

*Extra equipment:*  
*afterburner,*  
*destoner,*  
*full automation,*  
*pneumatic elevator,*  
*scales*

***R-60*** is an industrial-type coffee roaster designed to roast quantities of coffee **60-75kg**. A machine suitable for production units, ideal when combined with other industrial equipment such as the destoner and scales of both raw & roasted coffee, while the automated version is highly recommended for continuous profile roasting. The roasting results of R-60 are excellent with homogeneity even with the most hard coffee varieties.

**Coffeetool R-60**

# TECHNICAL SPECIFICATIONS

<b>BATCH</b>	60 kg - 75 kg
<b>HOURLY OUTPUT</b>	300 kg
<b>COOLING TIME</b>	2.5 min
<b>ROASTING TIME</b>	9-20 min
<b>THERMAL POWER</b>	255 kW
<b>HEATING</b>	Propane / Natural gas
<b>VOLTAGE</b>	380V / 3phase / 50-60Hz
<b>ELECTRIC POWER</b>	13.2 kW



✓ Headphones for crack sound

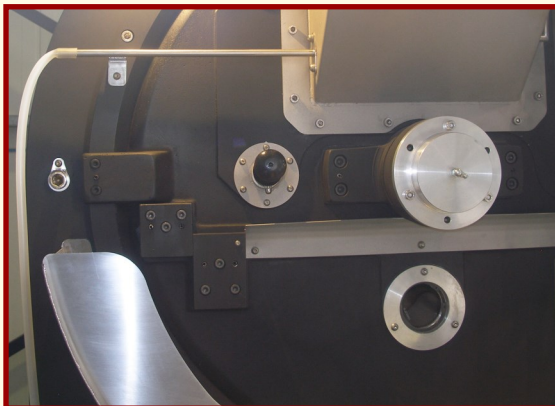
*\*The above values refer to raw coffee quantities & the max limit of the batch*



✓ Optional: closed frame type cooler



✓ Specially designed cyclone with continuous chaff output



✓ Big quantity sampler and sight glass for roasting development observation

# Coffeetool R-60



*AUTO version*  
*industrial TFT 10" touch screen*

✓ Manual roast option

✓ Complete profile saving

✓ Profile editing

✓ Import previously saved profiles with USB

✓ Automated: drum door & hopper entry openings, green coffee elevation, roasted coffee cooling, destoning

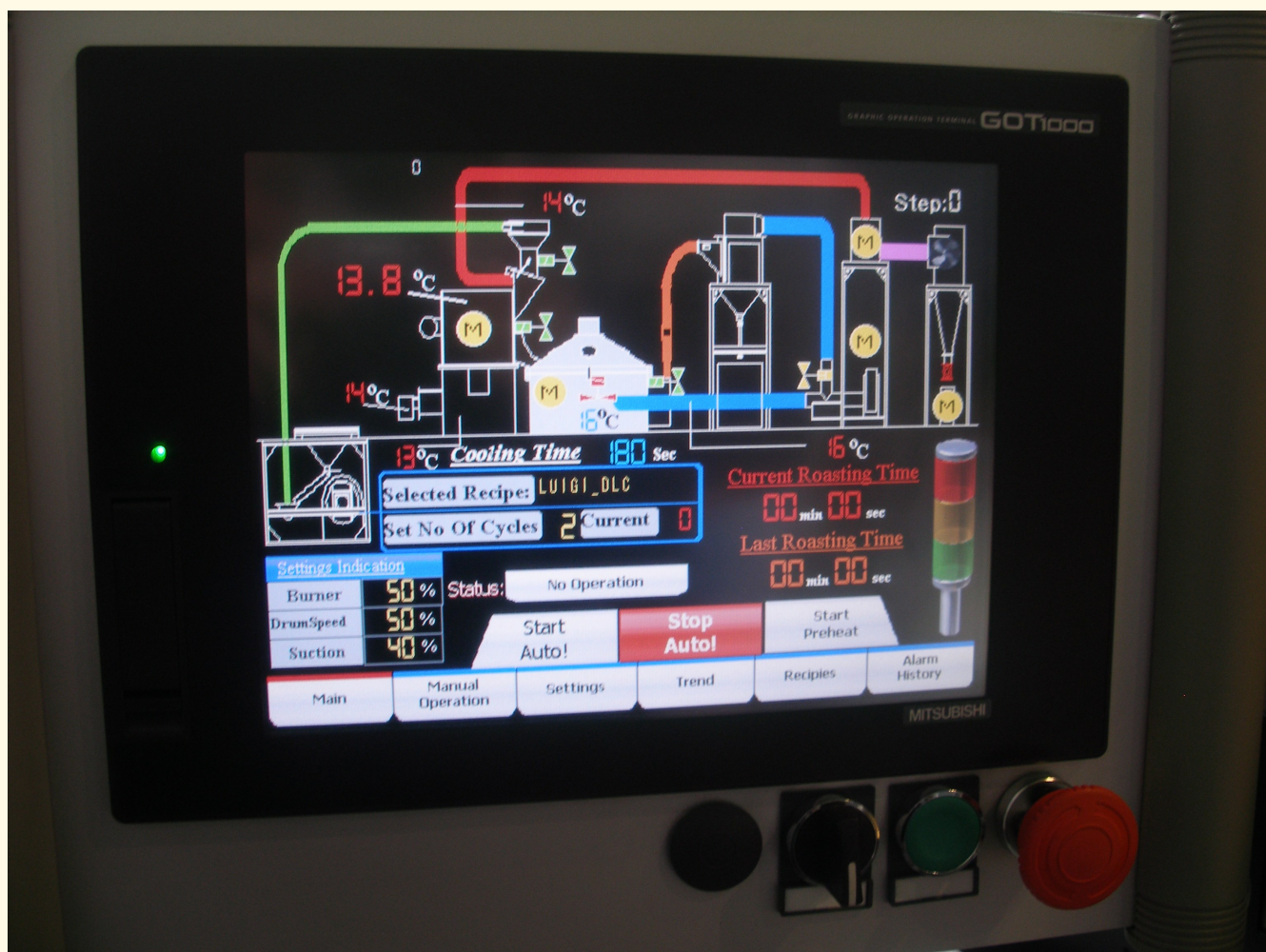
✓ Turning point logging

✓ Temperature-time graph

✓ RoR continuous display & logging


✓ First crack temperature & time logging

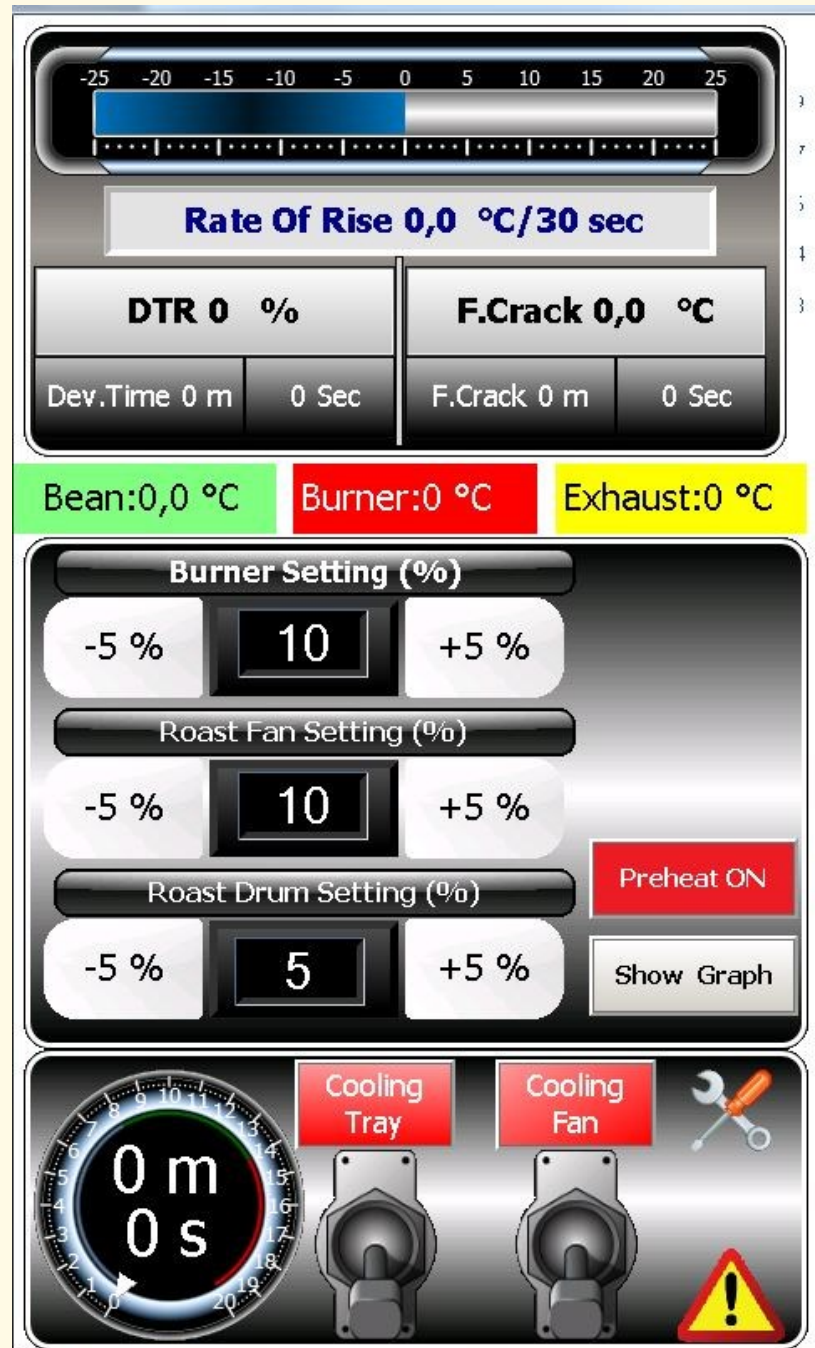
✓ Developing time logging



***Coffeetool R-60***

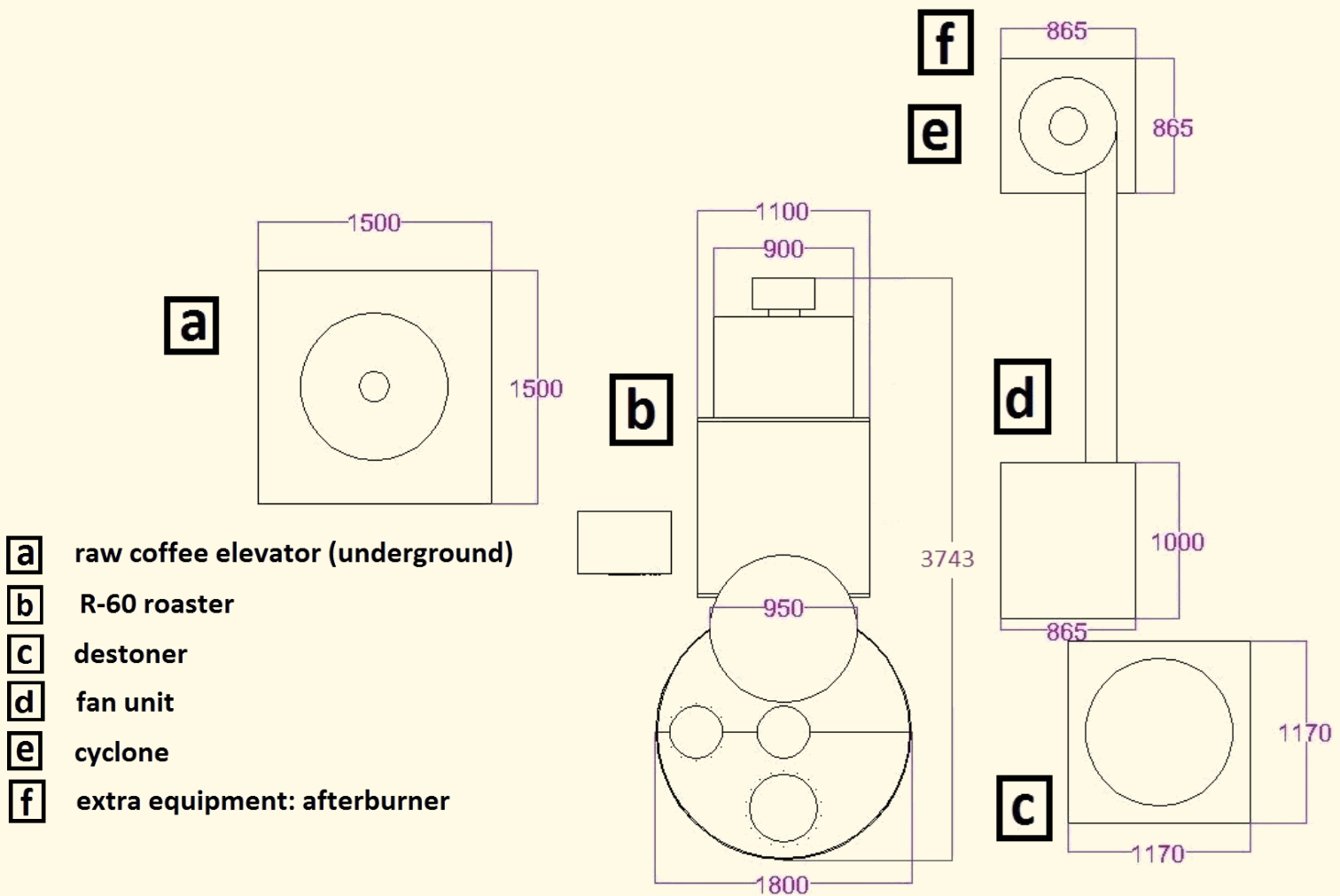
**STANDARD (manual) version**  
**industrial TFT 7" touch screen**

- ✓ USB port for data logging (excel format)
- ✓ RoR continuous display
- ✓ First crack temperature & time logging
- ✓ Developing time logging
- ✓ Turning point logging
- ✓ Temperature-time graph
- ✓ Extra:  easy connection
- ✓ Connectivity with other logging softwares available



*Main screen*

## ROASTER DIMENSIONS



- a** raw coffee elevator (underground)
- b** R-60 roaster
- c** destoner
- d** fan unit
- e** cyclone
- f** extra equipment: afterburner

## SAFETY MEASURES

- ✓ Water supply on cyclone, for protection in case of fire
- ✓ Cutting-edge technology equipment for the thermal protection of the motors with RE-SET button and restart
- ✓ Multiple safety measures on burner







- ✓ Roasters come with fully detailed user's manual
- ✓ After sales technical support provided
- ✓ 2 year/3.000 hours guarantee

**COFFEETOOL**  
**M. & S. SAKANTARIS SOCIETY**  
*Hand crafted machines since 1952*

INTERNATIONAL COFFEE EXPERT CORP.  
[WWW.EXPERTOSENCAFE.COM](http://WWW.EXPERTOSENCAFE.COM)